



Shep-O-Gram

German Shepherd Dog Club of Minneapolis/St Paul

December 2020 - January 2021



Shep-O-Gram

Editor Julie Swinland

651-457-5459

Blackforestgsd@msn.com

GSDC MSP Officers

President Mike Metz

651-489-7467

lindenhillgsd@comcast.net

Vice President

Julie Swinland

651-457-5459

Blackforestgsd@msn.com

Secretary Kim Morris

651-270-2351

kmorris4369@hotmail.com

Treasurer Laura Meyer

651-451-4013

Blcmeyer920@msn.com

Board members

Ann Jeddeloh

Jen Johnston

Laura Herweyer-Newland

Training Director

Kim Morris



Long time member Linn Klingel-Brown is in the hospital with Covid Pneumonia. Please keep her in your thoughts. Linn's son, Bob, is giving updates on Linn's FaceBook page. Linn is gradually improving. She is in the Verde Valley Medical Center in Cottonwood AZ. They are not accepting cards from outside but if you call the gift shop they can pick out a card for you and deliver it. Call 928-634-2251 ask for the gift shop.

The slate of new officers and 2 open board positions was presented at the December meeting. There were no contested positions so there is no need for a vote this year. The officers for 2021 are:

President Julie Swinland

Vice President Carol Ouhl

Secretary Linda Koestler

Treasurer Laura Meyer

Board Mike Metz

David Mielke

Ann Jeddeloh continues on the board for one more year

Our 2021 Banquet is scheduled for March this year. We will see how the pandemic is faring, it may have to be scheduled later in the year.

We have many events planned for the year, agility trials, the specialty show, the GSD Fun Day, obedience and rally trials, scent work trials, a herding clinic, herding trials, and hopefully a herding fun day.

After quite a few years of holding our herding trials at Polly Simpson's in New Richmond, we are moving to the Conroy Farm in Farmington, just a short distance from the Dakota County Fairgrounds. We will be able to expand out trials offering cattle and D course runs.

We will need a lot of volunteers to support all of our activities.

Julie Swinland

blackforestgsd@msn.com

Index

Page 1 Editorial

Page 2 Scent Work with Linda Spengler & Upcoming Events

Page 3 Preparing for Spring Trials

Page 4 Book Review WAG: The

Science of Making Your Dog Happy

Page 5 Socialization and Obedience workshop

Page 6 U.S. Dept. of Transportation Revises Airline Service Animals Rules

Page 7-13 Bone Cancer

Page 14 Brags

Page 15 Membership Applications

Page 16 Event Calendar & Training Schedule

January 22 Membership Meeting at the Animal Inn or by phone

Scent Work Seminars with Linda Spengler



On November 20 Linda Spengler presented classes on ORT (Odor Recognition Test) and a mock scent work trial. Since the participants in the first session had little to no experience in scent work the class was modified accordingly and dogs learned to look for odor in a number of boxes placed around the ring. They were very enthusiastic.

There was only one dog who stayed for the second session, searching interiors, exteriors, containers and vehicles.

We hope to have more sessions like this and the session that Holly Bushard presented last month.

Upcoming Events

We have many upcoming events provided Covid 19 doesn't get in our way

April 2-4 Agility Trial On The Run

June 4-6 Specialty shows Dakota County Fairgrounds?

June 12 GSD Fun Day Animal Inn

June 26-27 Obedience/Rally Trials Animal Inn

July 30-Aug 1 C Course Herding Seminar Farmington

Sept 24-26 Herding Trials Farmington

Oct 30-31 Obedience/Rally Trials Animal Inn

Scent Work TBD

Preparing for Spring Trials

I know it is hard to believe at this point, but spring and various types of shows and trials are coming. If you start working with your canine companion now, you could be ready to show in obedience, rally, scent work, herding, etc. Maybe you haven't really thought about it...The lower levels of various performance activities can be completed without intense training. It can strengthen the bond between you and your companion.

If you would like to dip your toes into competition, Novice Rally is a good place to start. Basic components of Novice Rally are Heel, Sit, Down, Front, and Right and Left About Turn. So once your dog has some experience with those commands, you are ready for some work on Rally Novice and Intermediate Rally which are both entirely on leash following a course laid out with signs for each exercise.

If you are new to competition, you might not be aware that when you and your dog finish your first AKC title while a member of our club, you will be eligible for a plaque with your dogs titles listed. In following years you can receive a bar to attach to the plaque listing new titles. Plaques and bars are given at our annual banquet. Most AKC titles require passing scores at a trial. Rally requires 3 qualifying runs for each title.



Another entry level competition is Beginner Obedience. These classes are mostly on leash following a heeling pattern with Sit, Heel, Right Turn, Left Turn, About Turn and Halt. There is also a Figure 8 and a Sit for Exam. Recall is off leash and there is a Sit Stay while you walk around the perimeter of the ring. You need to qualify 3 times in order to complete the title.

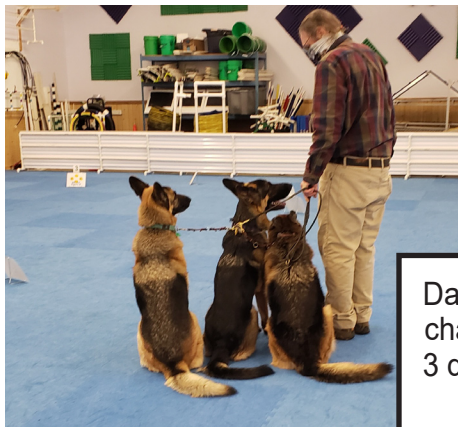
Our Club offers 3 levels of obedience and also rally classes on Friday nights at the Animal Inn. You can register on line on our web site GSDCMSP.org We also have Obedience and Rally Trials twice this year. The club usually holds matches several times a year where you can practice the tests.

We plan to offer Herding Instinct tests later this year. This does not require training but the dog should have a little obedience. Your dog must show interest in the sheep and move them in both directions and be called off. You have to qualify twice to earn the Herding Instinct title.

The AKC Temperament Test will be offered at the German Shepherd Fun Day in June. You can prepare for this by coming to a practice session that we will hold in a few months or you can just expose you dogs to various surfaces and noises. You need to qualify twice to complete the title.

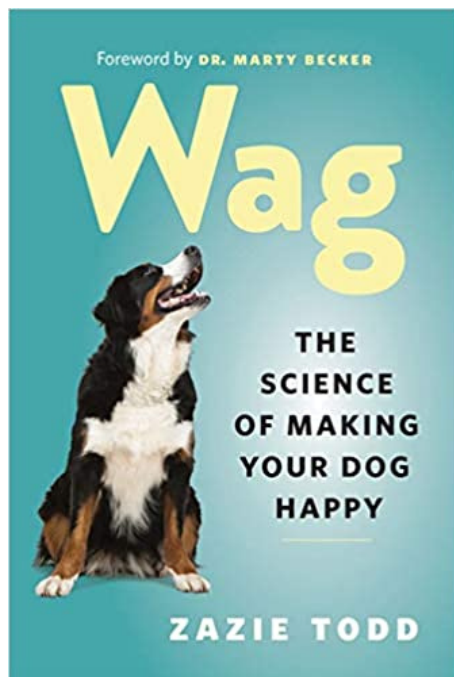
We have several Agility and Scent Work trials each year. These require a fair amount of training.

Once you start training and competing with your dog you may find it addicting. There is always one more title you want to acquire.



David Mielke likes a real challenge and works his 3 dog together on a rally course.





Zazie Todd. Wag: The Science of Making Your Dog Happy. Greystone Books, 2020.

Review by Cynthia Curran

This book is put forward as being a science-based discussion of canine behavior. It is helpful to point out that the science practiced by Zazie Todd and, for the most part, utilized in Wag, is social science rather than the physical kind. The author herself is a social psychologist, albeit with a strong interest in canine behavior and training. The great majority of the research results quoted in this volume are based on questionnaires, on recommendations by experts in various fields or through personal anecdotes by the author.

Todd arranges her book into easily navigated chapters which break down into various areas of interest. For example, there are practical topics such as the chapter on choosing a dog followed by one filled with advice on visits to the veterinarian or the groomer. There are

also sections which focus on more complicated or controversial areas such as discussions on how dogs learn. Kudos must be given to any person who attempts in one chapter, as Todd does, to examine various forms of motivation and techniques for dog training. Probably the most successful of her behavior-based chapters is one which reviews approaches for fear-based behaviors and other difficult issues that frequently concern modern dog lovers.

The author has a clear and informative prose style with an eye to de-mystifying the complicated and, at times, contentious world of the modern companion dog. With a direct approach based on social science, practical observations and personal anecdotes, Zazie Todd has produced a comprehensive volume that will most benefit those who are new to living with canines. This book also provides in one volume, an up-to-date compendium of modern approaches to dog training for those who have not had a dog in many years and are returning in a new century with quite different expectations.

For readers who are more familiar with many of the debates presented in Wag, the notes for each chapter included at the end of the book will point the way to further readings. These references contain recent articles in both scholarly and popular sources and are impressive in their scope.

I would recommend Zazie Todd's Wag as the perfect gift to any household who expects a new puppy. It is comprehensive in scope without being overwhelming yet there are pointers for those who wish to delve deeper into many of the topics covered. A good quality index indicates Wag can be kept on an accessible shelf for quick and frequent references as questions arise.

SOGGY by Julie Swinland



Check out GSDCMSP's Socialization/Obedience Workshop with Ron Halling & Lisa Veit on FaceBook for current information on the next Socialization/Obedience Workshop and training tips and videos. Please watch announcements for dates and times. Next Workshop Jan 17



I've been fielding questions about winter items that can help wear down our dog's energy level while staying indoors. Seek, scent work and of course Lisa's snuffle mats are all good to wear out your dog mentally without braving the elements for this winter season. We have some exercises planned this month that are both inexpensive yet fun activities you can perform with your dog over the upcoming months. As many of you are realizing without training our GSD's go in the wrong direction or drive us nuts with their seemingly unending energy levels. Come train with the GSD Club that knows GSD's!

This month we return indoors at Animal Inn. We follow their COVID procedures already in place for indoor work plus taking everyone's temperature while practicing social distancing. The Workshop is Saturday the 17th. The lecture will be at 10 am followed by the hands-on portion at 11am. The afternoon class, (for ANYONE that has been to a morning session), will follow at 12:30pm. This month we'll work further on off-leash work, hand signals, improved heeling and everyone's favorite, Directed Jumping. We'll add beginning and problem solving jumping for those working towards Open titles and of course winter games that utilize our GSD's mental capabilities. The last item for the afternoon class is dominance over obedience to teach your GSD to live with cats, squirrels, bunnies and any other variety of pets in the home. It has been a popular topic for privates and workshops over the summer as families were forced to spend the days together.

Our new black or grey stocking hats are now in stock. They have a subtle GSD head over an outline of the state of MN. Very nice and are priced at \$20.00. Pictures can be found on our Facebook page at <https://www.facebook.com/GermanShepherdtrainers>

If you're new to the workshops, please contact Ron to discuss which class is right for you and any issues ahead of time.

**Ron Halling
hallings@frontiernet.net
612-720-1536**

Tips From Ron

There are How-To videos on topics such as Drop on Recall, stand for Exam, and dealing with an attacking dog, on Socialization/Obedience Workshop page on FaceBook at <https://www.facebook.com/GermanShepherdtrainers/>.

Breaking News: U.S. Dept. of Transportation Revises Airline Service Animals Rules By AKC Government Relations Dec 02, 2020 | 2 Minutes

Today, the United States Department of Transportation (DOT) announced final revisions to its Air Carrier Access Act (ACAA) regulations that concern the transportation of service animals. The new finalized rules, which will be effective in January, are intended to ensure that America's air transportation system is safe for the traveling public and accessible to individuals with disabilities, and address concerns raised by individuals with disabilities, airlines, flight attendants, airports, other aviation transportation stakeholders, and other members of the public, regarding service animals on aircraft.

[Click here to read the final rule in its entirety.](#)

The final rule defines a service animal as a dog, regardless of breed or type, that is individually trained to do work or perform tasks for the benefit of a qualified individual with a disability, including a physical, sensory, psychiatric, intellectual, or other mental disability. This change in definition significantly aligns DOT's definition of "service animal" with the definition that the Department of Justice uses under the federal Americans with Disabilities Act.

The changes also clarify that emotional support animals (ESAs), comfort animals, companionship animals, animals being trained to be service animals, and species other than dogs are not considered to be "service animals" under the new DOT definition. Instead, airlines may recognize and accommodate emotional support animals as pets. Many commenter's, including airline industry stakeholder groups, disability rights advocacy organizations, and animal interest groups, including the American Kennel Club (AKC), cited safety concerns with the previous recognition of ESAs as service animals, including the growing trend of individuals misrepresenting their pets as service animals and the number of on-line mental health professionals willing to provide pet owners with emotional support animal and psychiatric service animal documentation in exchange for a fee.

The DOT rules also continue to prohibit airlines from refusing to transport a service animal solely based on breed. Airlines may continue to assess each animal individually to determine whether it poses a direct threat to the health or safety of others.

In keeping with our policy on the Misuse of Service Dogs, the AKC submitted comment in April 2020 that expressed support for the proposed definition of "service animal" and reiterated strong support for public accommodation that allows individuals with disabilities to use service dogs without regard to the dog's size, phenotype, or breed. Likewise, our comments condemned actions that fraudulently misrepresent a dog as a service animal when it is not, or attempt to benefit from a dog's service dog status when the individual using the dog is not a person with a disability.

CAKC's Government Relations Department (AKC GR) has begun analyzing the extensive provisions and DOT-supplied discussion and justifications of the newly-finalized rule, and will provide detailed information to stakeholders once that analysis has been completed.

For more information, contact AKC GR at doglaw@akc.org.



GERMAN SHEPHERD DOG Update

A NESTLÉ PURINA PUBLICATION DEDICATED TO GERMAN SHEPHERD DOG ENTHUSIASTS

VOLUME 18 | FALL 2020



NO. 1 BONE CANCER

Osteosarcoma Research Focuses on Extending Life



Used with permission from the Purina Pro Plan German Shepherd Dog Update, Nestlé Purina PetCare.

GERMAN SHEPHERD DOGS MAY BENEFIT FROM **OSTEOSARCOMA RESEARCH** **OF VACCINE THERAPY & IMMUNE RESPONSES**

Based on radiographs and her veterinarian's diagnosis, Julia Priest of Galt, California, believed that her 10-year-old German Shepherd Dog "Jessy" had torn the cranial cruciate ligament in her left stifle joint. The independent, rambunctious female had come limping into the house after a playful romp in the backyard. Opting for palliative care over surgery as recommended by her veterinarian, Priest began to notice a gradual diminished effect from the medications prescribed for pain and inflammation.

A versatile performance dog, Herret's Fire Jessy von Sontausen CDX TD BH PT JHD had earned titles in obedience, tracking and herding. Now in pain, Jessy had

morphed into a couch potato not wanting to put weight on the hurt leg. Priest consulted a specialist about the leg. Radiographs indicated osteosarcoma.

"Sadly, the cancer was advanced, and nothing could be done for Jessy," Priest says. "The time-frame from the original diagnosis to euthanasia was approximately six months, though the cancer progressed rapidly over the last eight weeks of her life. Jessy lived to be 11 years and 34 days of age."

Osteosarcoma, or bone cancer, is a tough, challenging malignancy. No one knows exactly what causes osteosarcoma; however, large and giant breeds are considered to be at higher risk due to their size and weight. A review article published in June 2019 in *Veterinary Sciences*¹ cited research indicating that osteosarcoma most commonly develops at or near the site of the growth plates, where cell turnover is highest. The extremely high risk of osteosarcoma developing in the limbs of large- and giant-breed dogs may be the result of replicative mutations during the normal processes of cell division required to create longer bones, with only modest contributions from heritable or environmental factors, according to sources referenced in the article.



"Jessy," an accomplished performance German Shepherd Dog, developed osteosarcoma at age 10. The devastating bone cancer occurs most commonly in large and giant breeds.

Standard treatment for the aggressive, most common primary bone cancer in dogs is surgical amputation of the affected leg followed by chemotherapy to help slow the development of metastasis. According to the Modiano Lab at the University of Minnesota, about 50 percent of dogs receiving the standard of care treatment live approximately one year. About 30 percent live two years, and 10 percent survive three years. Comparatively, dogs receiving neither surgery nor chemotherapy survive less than three months.

The gravity of canine osteosarcoma and its devastating effect on dogs and their families have prompted the American German Shepherd Dog Charitable Foundation Inc. (AGSDCF) to support research at the University of Florida investigating a vaccine therapy and to fully fund an AKC Canine Health Foundation Clinician-Scientist Fellowship allowing a medical oncology resident at the University of Minnesota to investigate the unique DNA methylation patterns that characterize the immune cells present in osteosarcoma tumors. The vaccine therapy study is also funded through the AKC Canine Health Foundation.

GD3-BASED VACCINE

Efforts to develop a life-extending vaccine for dogs with osteosarcoma that can be used as an adjuvant immunotherapy with standard of care treatment was the purpose of the two-year study at the University of Florida. Lead investigator Rowan J. Milner, BVSc,

CANINE CANCER RESEARCH INITIATIVE

Since 1995, the AKC Canine Health Foundation has provided funding of over \$12 million to support 207 studies of canine cancer. These investigations have helped scientists learn more about how cancer affects dogs. Discoveries across many types of canine cancer have contributed to earlier diagnoses and more effective treatments and often inform human cancer research via comparative oncology.



MMedVet, PhD, DACVIM (Oncology), DECVIM (Oncology), professor and director of Clinical and Translational Research, conducted a vaccine clinical trial to evaluate the effectiveness of a nanoscale liposomal disialyl-ganglioside (GD3)-based vaccine.

Found on the cellular surfaces of normal neural cells and melanocytes, GD3 is also highly expressed on osteosarcoma and melanoma cells and is believed to enhance malignancy in cancers and thus is being tested as a tumor antigen for immunotherapy. Forty dogs diagnosed with osteosarcoma were enrolled in a phase one vaccine trial conducted from January 2016 through April 2018.

"We vaccinated 34 dogs in phase one that received the vaccine, surgery and carboplatin chemotherapy and compared their survival to 30 dogs that received surgery and chemotherapy alone," says Dr. Milner. "The dogs receiving vaccination had four treatments. The sequence began in week one with carboplatin chemotherapy, followed in week two by vaccination, which coincided with dogs having

Purina and the AKC Canine Health Foundation have worked together since 1997 to support canine health research to benefit all dogs.



a low white blood cell count, and a repeat of chemotherapy in week three. Altogether, dogs received chemotherapy over six three-week periods, and were vaccinated four times in the three-week rotation schedule. This is a unique study as most immunotherapies are given after chemotherapy is complete. We wanted to capture those dogs that typically get metastases during chemotherapy.”

An abstract of the research, published in the September 2018 issue of *Cancer Immunology Research*,² reported on the early results. “Dogs with osteosarcoma have increased myeloid-derived suppressor cells (MDSCs) and regulatory T cells (Treg) cells compared to dogs without cancer that may be a factor in their maintaining a welcoming tumor microenvironment and resistance to immunotherapy,” Dr. Milner explains. “Approximately 30 percent of the vaccinated dogs lived significantly longer than the dogs receiving the standard of care treatment only.”

“We’ve continued the study and just completed phase two,”

Dr. Milner says. “In this part of the trial, we extended the vaccine protocol by adding two vaccines so dogs received a total of six vaccinations in combination with the carboplatin chemotherapy. In this phase, the last vaccine was given two weeks after the last chemotherapy treatment, thus we ended with a vaccine rather than chemotherapy as in phase one. Dogs that received six chemotherapy treatments and six vaccinations did even better than the dogs in phase one.”

Phase three of the study, scheduled to begin in the fall of 2020, involves giving dogs the vaccine prior to amputation and chemotherapy. “We hypothesize that stimulating the immune system before removing the cancer will enhance the effects of the vaccine,” says Dr. Milner.

“Our goal is to see if we can improve overall survival and delay the time to metastasis with chemotherapy and vaccine immunotherapy by improving the immune system’s response to osteosarcoma. We will continue to closely watch for changes in dogs’ immune function to deter-

A SNAPSHOT OF CANINE OSTEOSARCOMA

Most Common Bone Cancer

Osteosarcoma is the most common primary bone cancer in dogs, accounting for an estimated

85% OF CASES



Immediately See Your Veterinarian

Timeliness is critical should you notice these signs of osteosarcoma in your dog: lameness, swelling at the tumor site, and joint and bone pain. Behavioral changes may include irritability, aggression, loss of appetite, weight loss, whimpering, sleeplessness, and reluctance to exercise

Concerns About Fast Growth

Factors that increase risk are rapid growth in puppies, thus owners are advised to feed a large breed puppy food that promotes slower growth



MANY THOUSANDS OF NEW CASES A YEAR

Large and giant breeds are at greatest risk of developing osteosarcoma

10-50X MORE COMMON IN OLDER DOGS THAN PEOPLE

A rare, highly fatal cancer in humans, mostly affecting children, adolescents and young adults, osteosarcoma occurs at a much higher rate in dogs

Occurs in Senior Dogs

Usually becomes evident around 8 to 10 years of age, though osteosarcoma can affect dogs under 1 year

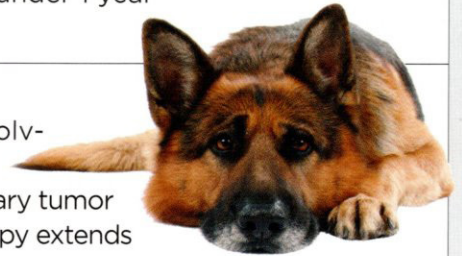
56-86%

Occur in Long Bones of the Legs

The majority of osteosarcoma tumors develop in dogs' long bones of the limbs

Treatment Extends Life

Standard of care treatment involving surgical amputation of the affected limb to remove the primary tumor followed by adjuvant chemotherapy extends life 9 to 12 months versus no treatment or palliative treatment

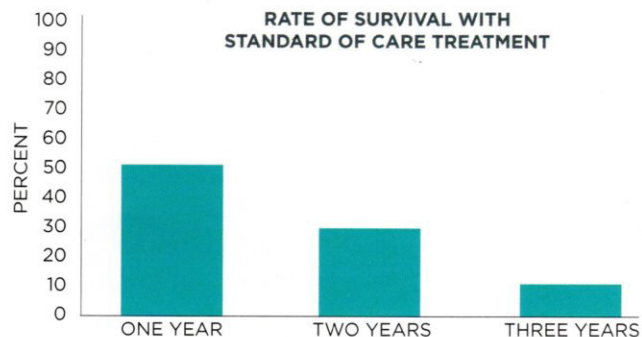


Gender Predisposition

No gender predisposition has been documented in dogs developing osteosarcoma and no risk is seen from neuter or spay surgery

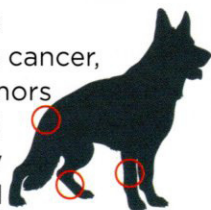
Boosting Survival with Treatment

About 50% of dogs survive one year with standard of care treatment, about 30% survive two years, and about 10% survive three years. Without treatment, a dog may live less than three months



Highly Metastatic

A very aggressive cancer, osteosarcoma tumors have likely spread beyond the primary site when diagnosed



Sources: The National Canine Cancer Foundation and Modiano Lab at the University of Minnesota

AMERICAN GERMAN SHEPHERD DOG CHARITABLE FOUNDATION HELPS FUND OSTEOSARCOMA RESEARCH

The American German Shepherd Dog Charitable Foundation Inc. (AGSDCF) is a significant source of funding for research that helps to advance the health and well-being of German Shepherd Dogs. The osteosarcoma research featured in this issue of the *German Shepherd Dog Update* is an example of the important research that AGSDCF helps to support.

The AGSDCF was founded in 1984 by devoted supporters of the German Shepherd Dog to provide an independent nonprofit organization that could accept tax-deductible donations for the benefit of funding research studies aimed at reducing disease incidence in the breed and improving treatment options for these conditions. Among the diseases supported are: cardiac defects, esophageal deficits, pancreatic insufficiency, toxic gut syndrome, bloat, degenerative myelopathy, hypothyroidism, and canine cancer. A founding member of the AKC Canine Health Foundation since 1997, the AGSDCF has provided funding for the Foundation's Clinician-Scientist Fellowship program. AGSDCF also supports the Veterinary Student Scholars Program of the Morris Animal Foundation.

German Shepherd Dog breeders and owners are encouraged to contribute to the AGSD Charitable Foundation. To learn more, please visit agsdcf.com.



mine the optimal vaccine protocol that will help dogs with osteosarcoma live longer lives."

CHARACTERIZING IMMUNE CELLS

Caroline Wood, DVM, PhD, a recent medical oncology resident at the University of Minnesota whose AKC Canine Health Foundation Clinician-Scientist Fellowship is funded by AGSDCF, is focusing on the immune system of osteosarcoma by looking at the DNA methylation patterns of lymphocytes, the main immune cells in the body.

"DNA methylation is a biological process by which a molecule acts as a chemical tag on DNA, which can alter the expression of the gene without changing its

sequence," Dr. Wood explains. "This leads to either increased or decreased transcription, and usually changed activity of the gene. The goal of this study is to further characterize the specific types of memory T-lymphocytes that help the immune system kill cancer cells present in osteosarcoma."

Her mentor, Jaime Modiano, VMD, PhD, the Perlman Endowed Chair of Animal Oncology at the University of Minnesota, is a longtime cancer researcher. "The data tell us that the magnitude of immune infiltrates in dog osteosarcoma seems to be larger than in human osteosarcoma, and yet the presence of immune cells in the tumor environment is a favorable prognostic indicator in humans but not in dogs," he says.

"This work will help us to better understand these differences and learn more about the patterns of methylation in each of these immune subsets," says Dr. Modiano. "This is a completely new application to canine cancer studies, though similar approaches have been used in human tissues to quantify the immune response."

Dr. Modiano reflects that over the past 30 years, the prognosis and treatment for osteosarcoma has changed little. "Trying to develop a single approach to treat, prevent and manage osteosarcoma that will be effective across the board is very challenging," he says. "In every dog, the tumor is different. This makes it virtually impossible to know how or whether an individual dog will respond to treatment."

In recent years, Dr. Modiano has focused on gene expression profiling to predict a dog's prognosis and response to treatment



and to understand the biological behavior of osteosarcoma tumors. Insights from his research may help advance understanding of how quickly the disease progresses locally, how quickly it spreads to other sites, and what factors may accelerate or delay disease progression.

"The goal is to one day be able to associate tumors with predictable behaviors that will improve our ability to determine outcomes of individual therapies or to deploy novel therapies or immunotherapies that will change tumor metabolism," he says. "Learning how tumors communicate is producing exciting information that will help us determine an individual dog's cancer risk to develop effective strategies to treat and prevent osteosarcoma."

For the many thousands of new canine cases of osteosarcoma that occur every year — many dogs die only months after diagnosis — the good news is that progress is being made, thanks to support from AGSDCF and the AKC Canine Health Foundation.

"As we learn more about what causes cancer in dogs, we will be able to develop more effective and less harmful treatment options," Dr. Wood says. "In essence, we hope that one day cancer will become a manageable chronic condition rather than a terminal diagnosis." ■

¹ Makielski KM, Mills LJ, Sarver AL, et al. Risk Factors for Development of Canine and Human Osteosarcoma: A Comparative Review. *Veterinary Sciences*. 2019;6(2):48.

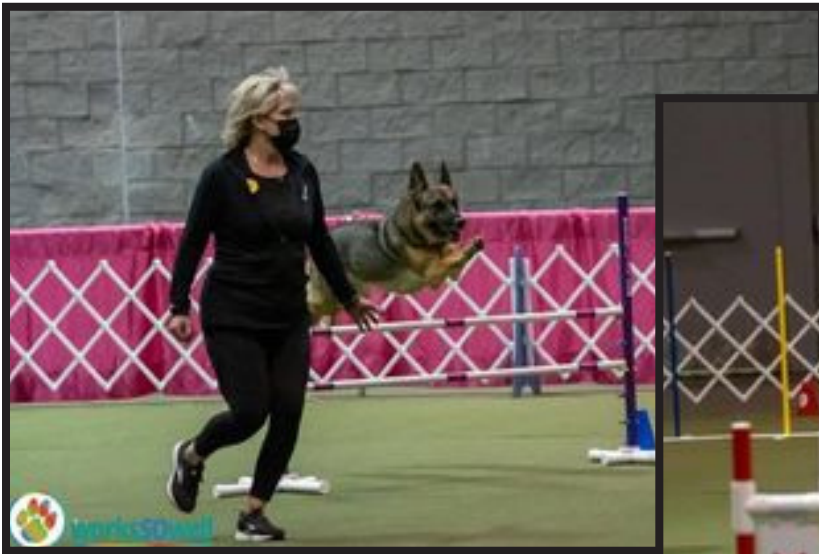
² Sahay B, Hutchinson S, Cascio M, et al. Changes in Immune Profiles of Osteosarcoma Dogs Receiving a GD3-Based Vaccine Concurrently with Carboplatin Chemotherapy and Surgery. *Cancer Immunology Research*. 2018;6(9)Supplement.

Purina appreciates the support of the American German Shepherd Dog Charitable Foundation (AGSDCF), particularly Ginny Altman, current vice president of the Foundation and past president of the German Shepherd Dog Club of America, in helping to identify topics for the *German Shepherd Dog Update*. The AGSDCF board of directors also helps to identify topics.

LOOKING TO REPRINT?

German Shepherd Dog Update articles may be reprinted provided the article is used in its entirety and in a positive manner. To request permission to reprint this article, please contact the editor at: Barbara.Fawver@purina.nestle.com. Reprints should include the following attribution: Used with permission from the *German Shepherd Dog Update*, Nestlé Purina PetCare.

BRAGS



MACH2 KONAS MANN AUS STAHL VOM KNOCHEN BN RAE MXG MJS MXF
TQX T2B3 CGC TKI
“Bones”

Bones is the # 5 AKC Agility German Shepherd Dog and competed with his owner Rhonda Meath at the 2020 AKC Invitational held at the Orange County Convention Center in Orlando Florida in December. He has 32 AKC performance titles as well as Rally Freestyle Element dance titles.

Rhonda & Bones are practicing a new dance routine together for 2021 & will continue to compete in agility, obedience & Rally .

Owner: Rhonda Meath
Breeder: Don & Cindy Carter



Tasha's latest, 3=1st place
3 high in class,
RAT-OX title in barn hunt ,
6 qualifiers in scentwork
3 new scentwork titles
David Mielke



The German Shepherd Dog Club of Minneapolis and St. Paul MEMBERSHIP APPLICATION

Applicant Name (Please Print) _____ Date: _____

Address: _____ Phone: _____

City: _____ State: _____ Zip: _____

Email: _____

Please indicate the name(s) of any other dog clubs you belong to: _____

Number of German Shepherds you own: _____ Number of litters bred in the last two years: _____

PLEASE INDICATE (X) THE AREAS IN WHICH YOU MAY BE INTERESTED:

Obedience: ☐ Rally: ☐ Conformation: ☐ Agility: ☐ Herding: ☐ Breeding: ☐ Other (please specify): _____

I would be interested in helping with the following activities:

Specialty Shows & Trials: ☐ Fun Matches: ☐ Programs: ☐ Show-O-Grams: ☐ Training: ☐
Hospitality: ☐ Fundraising: ☐ Fun Day: ☐ State Fair: ☐

PLEASE INDICATE HOW YOU HEARD ABOUT THE CLUB:

Breeder: ☐ Club Member: ☐ Facebook: ☐ Training: ☐ Rescue: ☐ State Fair: ☐ Friend: ☐
Show/Trial: ☐ Fun Day: ☐ Socialization Obedience Workshop: ☐ Vet: ☐

I HEREBY MAKE APPLICATION TO THE ABOVE CLUB AND AGREE TO BE COVERED BY ITS BY-LAWS.

APPLICANT SIGNATURE: _____ DATE: _____

MEMBER PROPOSED BY: _____

This application must be accompanied by a check for one year's dues and signed by a current club member sponsor. Dues are \$25 for a single membership or \$30 for a couple. Please make checks payable to the GSDC of Mpls & St. Paul. Return this application at a training class or club meeting or mail with check to:

Please Note: At the next Membership Meeting following the date applied, the applicant will be announced in the Minutes, whereas any Club members that may object to membership have 30 days to raise their concern. If no concerns are raised, the applicant receives Membership status as stated in the Bylaws which are on the website at www.gsdcmpls.org. Dues shall be assessed on a yearly basis from October 1 through September 30. Membership dues for applicants that become members between July of a given year and the December Membership Meeting date of that year will be waived for the following year.

Please direct any questions to _____

To be completed by Membership Chair:

Date Dues Paid: _____ Check: ☐ Cash: ☐ Club cash box: ☐ Online: ☐ Mailed with Application: ☐

Applicant's name added to membership list: ☐



German Shepherd Dog Club of America, Inc. Application for Membership

There are two types of membership. **Regular Members:** Minimum age of 18 years. Must be in good standing with AKC. Applicant (and renewing members) agrees to abide by the GSDCA By-laws and the Rules and Regulations of the American Kennel Club. Two endorsements by current members must be provided by new applicants. Applicant's name will be published in the German Shepherd Dog Review. Provided no objections have been filed within 30 days of publication in the Review, applicant will be notified that he/she is eligible for all privileges including the right to vote. **Junior Members:** Must be 10 years of age and not more than 18 years of age and shall subscribe to the same criteria as Regular Membership with the exception of the requirement to pay dues. Junior members cannot vote, hold office, or serve on committees other than junior committees.

To apply and pay ONLINE with a credit card, please go to gsdca.org/join-the-gsdca/apply-online. You can MAIL this form to Laura Gilbert, 557 Dunning Lane, Chesapeake, VA 23322

Circle Your Desired Membership Type:

Membership Category	Delivery	One year	Three year	Five year
Single	Online only	\$45	\$130	\$215
Single	Print & online	\$75	\$215	\$355
Family	Online only	\$70	\$200	\$335
Family	Print & online	\$115	\$325	\$545
Additional delivery charges				
Delivery in poly wrap: \$5.00				
1st Class delivery: \$36.00				
Outside United States: \$24.00				

Membership Information (please print)

Last Name: _____ First Name: _____ Middle Initial: _____

Date of Birth: _____ (Juniors Only)

Address: _____

City: _____ State: _____ ZIP/Postal Code: _____

Country: _____ Telephone: _____ Email: _____

For FAMILY Memberships, provide 2nd member information. (Family membership is defined as 2 people living in the same household -- principal & one other person).

Last Name: _____ First Name: _____ Middle Initial: _____

Telephone: _____ Email: _____

What activities do you enjoy with your GSD? (Circle all that apply) Agility ☐ Conformation ☐ Herding ☐

House Pet ☐ Obedience ☐ Rally ☐ Schutzhund/Working Dog Sport ☐ Tracking ☐ Other ☐

Endorser 1 Printed Name & Signature: _____

Endorser 2 Printed Name & Signature: _____

Applicant/Member Signature: _____ Date: _____

Club Events Calendar

Jan 22 Membership meeting
Jan 17 Socialization and obedience workshop
Feb 12 Membership Meeting
Feb 13 Socialization and Obedience Workshop
March 12 Membership Meeting
March 21 Socialization and Obedience Workshop
April 2-4 Agility Trials On The Run

GSDCMSP Class Schedule

Training for 2021 has resumed

Register online. <http://gsdcmssp.org/training.html>

Ring 1

.....Various classes, starting at 6:00

Ring 3

.....Rally Julie Swinland 6:00-7:20

Training Director:

kmorris4369@hotmail.com

**Social Distancing
and Masks (for
humans) are
Required in and
around the Animal
Inn building.**